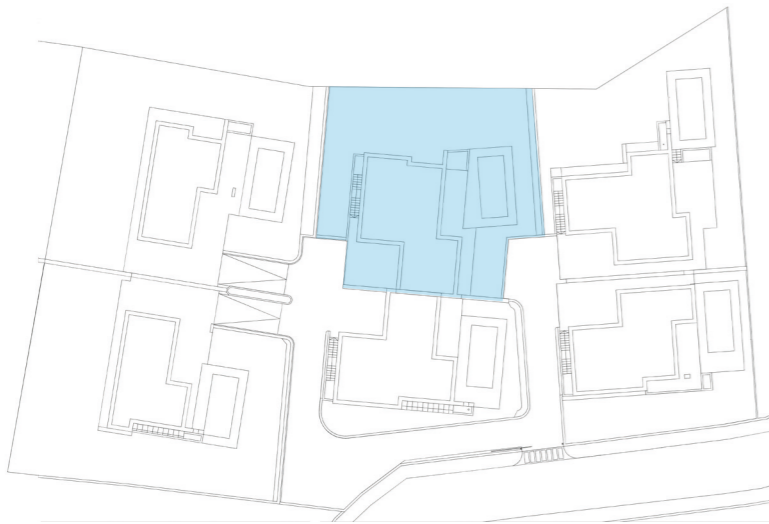


## Villa 3

Pianta piano terra e interrato



1 Soggiorno-cucina	50,64	m <sup>2</sup>
2 Disimpegno	2,93	m <sup>2</sup>
3 Camera	14,79	m <sup>2</sup>
4 Camera	15,24	m <sup>2</sup>
5 Bagno	4,08	m <sup>2</sup>
6 Bagno	4,08	m <sup>2</sup>
7 Studio	10,50	m <sup>2</sup>
8 Disimpegno	2,50	m <sup>2</sup>
9 Bagno	4,75	m <sup>2</sup>
10 Piscina e sundeck	49,71	m <sup>2</sup>
11 Piano interrato	68,17	m <sup>2</sup>
Aree esterne	79,47	m <sup>2</sup>
Giardino	278,22	m <sup>2</sup>

Superficie commerciale 301,40 m<sup>2</sup>



Piano Interrato



Piano Terra

